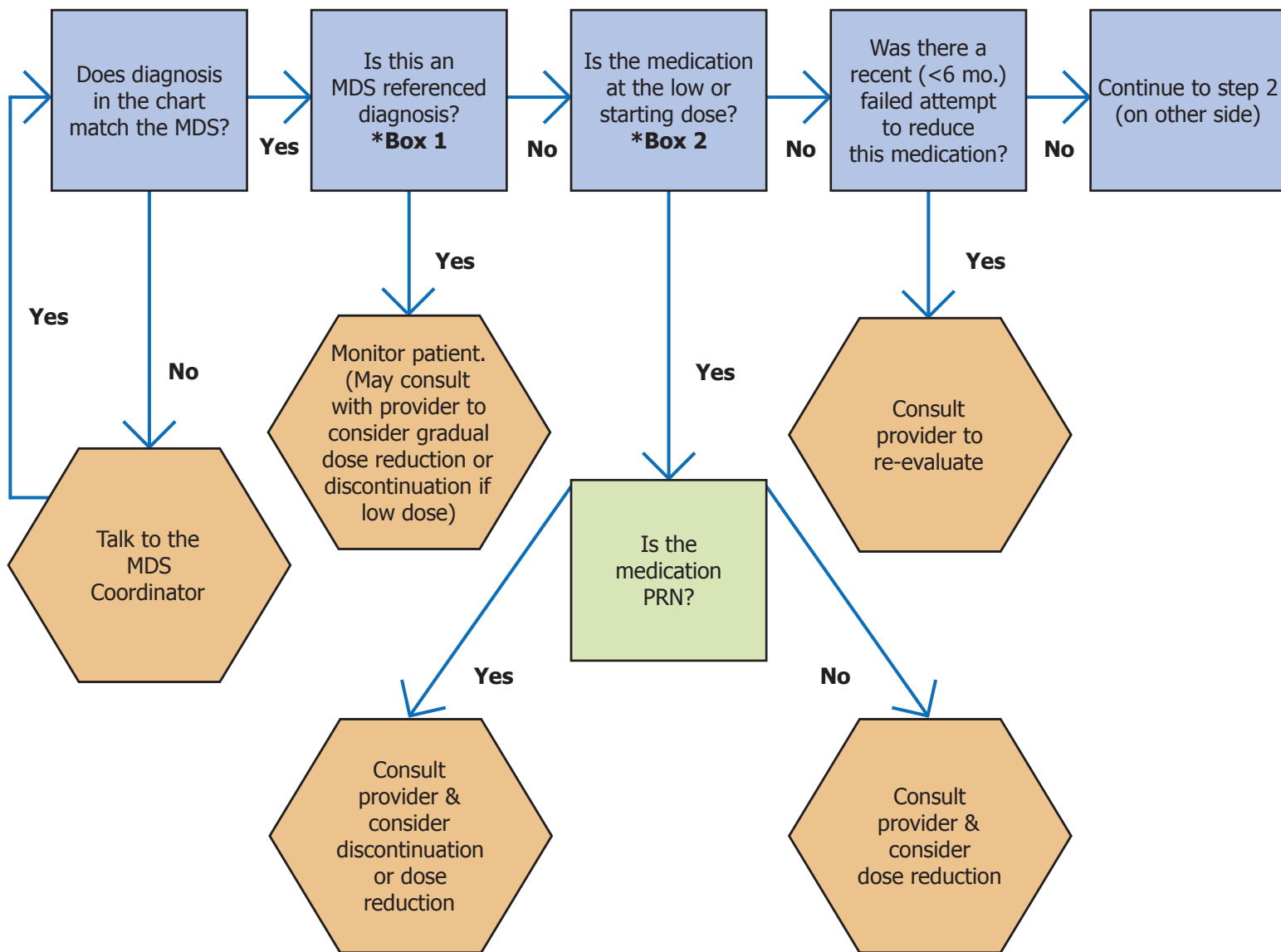


Antipsychotic Reduction: Resident Prioritization Tool *Part 1

The Residents in the hexagons are intended to be addressed before moving to Part 2



HEALTH QUALITY INNOVATORS



Box 1
MDS Referenced Diagnosis

- Schizophrenia
- Schizoaffective disorder
- Tourette’s Syndrome
- Huntington Disease

*consult MDS for more information

Box 2
Common Low or Starting Dose

- Quetiapine (Seroquel) 12.5-25mg
- Olanzapine (Zyprexa) 2.5-5mg
- Risperidone (Risperdal) 0.25-0.5mg
- Aripiprazole (Abilify) 2-5mg
- Ziprasidone (Geodon) 20-40mg

